

**Proposal to expand Edward Peake Church of England  
Voluntary Controlled Middle School to provide new middle  
school places for children in Biggleswade, Bedfordshire**



Notice is given in accordance with section 19(1) of the Education and Inspections Act 2006 that Central Bedfordshire Council intends to make a prescribed alteration to Edward Peake Church of England Voluntary Controlled Middle School, Potton Road, Biggleswade, Bedfordshire SG18 0EJ from 1 September 2016.

The proposal is to expand Edward Peake Church of England Voluntary Controlled Middle School from a four form of entry (480 place) middle school for pupils aged 9 to 13 to a five form of entry (600 place) middle school for pupils aged 9 to 13.

The current capacity of the school is 480. Following implementation the proposed capacity will be 600. The current number of pupils registered at the school is 355.

The admission number for the current school is 120 for each year group and the proposed admission number will be 150 for each year group.

This Notice is an extract from the complete proposal. Copies of the complete proposal can be obtained from: The Information Manager, Central Bedfordshire Council, Room DC2, Watling House, High Street North, Dunstable, Beds, LU6 1LF. It can also be viewed on the Council's website at [www.centralbedfordshire.gov.uk/publicstatutorynotices](http://www.centralbedfordshire.gov.uk/publicstatutorynotices) and on the school's website at [www.edwardpeake.beds.sch.uk](http://www.edwardpeake.beds.sch.uk)

Within four weeks from the date of publication of this proposal, any person may support, object to or make comments on the proposal by sending them to the Deputy Chief Executive / Director of Children's Services, Central Bedfordshire Council, Priory House, Chicksands, Shefford, Beds, SG17 5TQ.

Signed: Edwina Grant

Deputy Chief Executive / Director of Children's Services

Publication Date: 2 June 2014

**Explanatory notes:**

New middle school places are required in Biggleswade as a result of significant housing development within the area.

## PROPOSAL FOR PRESCRIBED ALTERATION

Dated – Monday 2 June 2014



Central  
Bedfordshire

### 1 - Name of Proposer

(Local Education Authority or Governing Body)

Central Bedfordshire Council

### 2 - School Name

Edward Peake Church of England Voluntary Controlled Middle School

### 3 - School Address

Potton Road  
Biggleswade  
Bedfordshire  
SG18 0EJ

### 4 - Description of proposed prescribed alteration

To expand Edward Peake Cof E VC Middle School from its current capacity of 480 places to 600 places, from 4 forms of entry to 5 forms of entry.

### 5 – Evidence of demand

Up to 2018 1,063 dwellings are planned for the Biggleswade area including 1,020 dwellings within the Land East of Biggleswade, South of Potton Road and the Kings Reach developments. From 2019 to 2027 a further 903 dwellings are planned for the Biggleswade area within the Land East of Biggleswade, South of Potton Road and the Kings Reach developments plus a further 330 dwellings on land north of Potton Road.

The need for additional middle school places is proposed to be met through the expansion of Edward Peake CofE VC Middle School which is immediately adjacent to the largest of the development areas at Kings Reach. The S106 agreement also includes provision for an allocation of land for additional facilities. The proposed expansion would take the school from its current capacity of 480 to 600 places.

The additional lower school places required as a result of the scale of demographic growth in the area is to be met through the new 2 Form Entry,

300 place expansion of St Andrew's CofE VC Lower School, Biggleswade, for implementation in September 2015 on a new site within the new development. Additional upper school places are proposed to be provided by the expansion of Stratton Upper School.

A consultation was carried out regarding the proposal to expand Edward Peake CofE VC Middle School from 3 March to 31 March 2014. The consultation document is attached at Appendix A.

Copies of the consultation document were provided to –

- The Governing Body of Edward Peake CofE VC Middle School
- The staff of Edward Peake CofE VC Middle School
- The parents and carers of pupils currently attending Edward Peake CofE VC Middle School

And copies of the consultation document were made available to –

- The Member of Parliament for Biggleswade
- Biggleswade Town Council
- Neighbouring local authorities to Central Bedfordshire Council
- Local dioceses
- The Members of Central Bedfordshire Council
- All schools and academies within Central Bedfordshire

A press release was issued advising of the consultation.

The consultation document was also available on the Central Bedfordshire Council website with an on-line response facility.

Two meetings were held at Edward Peake CofE VC Middle School on 10 March 2014; the first at 4.00 pm for school staff and governors, followed by the second meeting at 7.00 for parents, carers and the general public . The presentation that was given at both meetings is attached at Appendix B. Notes of both meetings which include the concerns and questions that were raised, are attached at Appendix C and D

During the 4 week consultation, 58 responses were received, 83% of which were in favour of the proposal. The results of the consultation are available at Appendix E.

## **6 – Objectives**

Edward Peake CofE VC Middle School is one of two schools within Biggleswade that offer places for years 5-8. It is an Ofsted 'Good' school. The current school has a capacity for 480 and is now coming under increasing pressure for places from the new housing developments.

In terms of Central Bedfordshire Council's Policy Principles for Pupil Place Planning in schools, this proposal will provide local places for local children promoting sustainable modes of travel and will create a more financially and educationally viable middle school above the suggested minimum size of 480 places. It will mean expansion of a popular and Ofsted rated Good school and will promote further partnership working within the Biggleswade Community Union of Schools which is already working together to deliver new places at

Lower and Upper Schools.

A feasibility study has been commissioned to inform the design process and ensure that capital investment in the expansion of the school also seeks opportunities to create inspirational learning environments for the school and to maximise community use.

### **7 – The effect of the proposed alteration on other schools, academies and educational institutions within the area**

There are two schools in Biggleswade that cater for middle school children (years 5-8): Edward Peake CofE VC Middle School and Biggleswade Academy. Edward Peake CofE VC Middle is the closer of the two schools to the new development being immediately adjacent to the largest of the development areas at Kings Reach. It is not anticipated that there will be any adverse effect on Biggleswade Academy from this proposal.

Edward Peake CofE VC Middle School is a feeder school for Stratton Upper School, Biggleswade. As a result of a review of the forecast growth in Upper School pupil forecasts in the Biggleswade area, Stratton Upper, which is an academy, has been invited to undertake consultation and approval processes required, as an Academy, by the Education Funding Agency and the Council's Executive, to expand from its current capacity of 1,250 places to provide 1,650 places with an implementation date of September 2016. The Academy is undertaking significant detailed design work and has commenced the consultation process. The Academy has also confirmed its ability to accommodate forecast pupil numbers in the meantime.

### **8 – Project costs**

The proposed new school is contained within Central Bedfordshire Council's New School Places Programme 2013/14 – 2018/19. The estimated capital cost of the project is £2.3m and it is to be funded through the Council's New School Places Programme.

### **9 – Implementation**

It is proposed that the new school will be ready for the start of the new Autumn term in September 2016

### **10 – Procedure for responses; support, objections and comments**

Within four weeks from the date of publication of this proposal (i.e. by Monday 30 June 2014), any person may support, object to or make comments on the proposal by sending them to the Deputy Chief Executive / Director Of Children's Services, Central Bedfordshire Council, Priory House, Chicksands, Shefford, Beds, SG17 5TQ



# **Consultation on the proposed expansion of Edward Peake Church of England Voluntary Controlled Middle School**

To provide new middle school places for children in Biggleswade

**Monday 3 March 2014 –  
Monday 31 March 2014**

## 1. Introduction

Councils have a duty to ensure there are enough suitable school places for children aged 5-16 (as per Section 14 of the Education Act 1996). The Council's role is to promote parental choice, diversity, high standards and fair access to education (Education and Inspections Act 2006).

This document explains the reasons for proposing to expand Edward Peake Church of England Voluntary Controlled (CofE VC) Middle School and how you can have your say.

## 2. Background

New middle school places are required in Biggleswade as a result of significant housing developments in the area. By 2018 1,063 new dwellings are planned for the Biggleswade area including 1,020 dwellings within the Land East of Biggleswade, South of Potton Road and Kings Reach developments. From 2019 to 2027 a further 903 dwellings are planned for the same areas of the town.

The Council has been working with schools and academies within the Biggleswade area that collectively comprise the Biggleswade Community Union of Schools (BCUS) to review places and plan for the impact of demographic changes across the area over the next five years and beyond. The pressure on existing provision and the need for more middle school places in this part of Biggleswade is clear, as is the requirement for additional lower and upper school places which are the subject of separate consultation processes.

## 3. Our proposal

In order to meet the increased demand for middle school places the Council now proposes to permanently enlarge Edward Peake CofE VC Middle School from its current capacity at four forms per year group (480 place) to become a five forms per year group (600 place) school on its existing site.

This proposal has been developed in consultation with the school's Governing Body and the St Alban's Diocese who are both supportive of the Council's plans.

## 4. Why are the Governing Body of Edward Peake CofE VC Middle School and Central Bedfordshire Council consulting with you?

This proposal constitutes a significant expansion of Edward Peake CofE VC Middle School which requires both informal consultation and the publication of Statutory Proposals, in accordance with the Education and Inspections Act 2006. Informal consultation enables all interested parties to express their views on the proposal and thereby influence the decisions and actions made regarding the additional provision of school places.

Starting on page three of this document you will find a list of Frequently Asked Questions (FAQs) which may help to address some immediate concerns that you may have.

## 5. The consultation process

You can **have your say via the online form** which is available on the Council's website at [www.centralbedfordshire.gov.uk/consultations](http://www.centralbedfordshire.gov.uk/consultations) or you can complete pages five and six of this document and return them to the FREEPOST address provided at the end of the form. Completed forms should be returned by **5.00pm Monday 31 March 2014**.

Meetings will be held with the staff, union representatives and governors of Edward Peake CofE VC Middle School.

There will also be a **public meeting** which will be open to all interested parties. This meeting will be held at Edward Peake CofE VC Middle School on **Monday 10 March 2014** at **7.00pm**.

The timeline for the process will be –

Action	Timescale/Deadline
Four week consultation period begins	Monday 3 March 2014
Staff and Governors meeting	Monday 10 March 2014 at 4.00pm
Public meeting	Monday 10 March 2014 at 7.00pm
End of consultation period	Monday 31 March 2014
If decision is made to proceed with the proposal, Statutory Notices will be published on	Monday 2 June 2014
4 week period for the submission of comments and/or objections in response to the Statutory Notices	Monday 2 June 2014 to Monday 30 June 2014
End of Statutory Notice period	Monday 30 June 2014
Final decision regarding the proposal to be made by the Council's Executive Committee on	Tuesday 19 August 2014

**If a decision is made to permanently expand Edward Peake CofE VC Middle School, formal implementation of the expansion will commence in September 2016, for the 2016/17 academic year.**

## 6. Frequently asked questions

**Q What new facilities will be provided at the school to accommodate the increased number of children? How will these new facilities impact upon the current school premises?**

A -The Council is working with the school to consider not only the need for extra classrooms but to look at the impact the extra numbers will have on the rest of the school's infrastructure. The school is currently working with the Council on a feasibility study which will then inform further detailed design work. Proposals will be developed which will bring the school up to the recognised standards for the increased size of school in permanent accommodation. A separate planning process will be undertaken in due course.

**Q – When will these new facilities be completed?**

A – The overall changes will be phased in over a period of time so as to minimise the disruption to the rest of the school and a phasing plan will be developed in consultation with the school. The whole of the new facilities are proposed to be ready for occupation in September 2016.

**Q – Does the Council have the funds to provide these new facilities?**

A – Yes, the total costs are estimated at approximately £ 1.5m. The council will fund the expansion via developer contributions which the Council has already secured for education purposes under S106 agreements.

**Q- Will the additional facilities reduce the amount of outdoor space that is available for the current and for the additional children?**

A – The S106 agreement also includes provision for an allocation of land for additional playing fields.

**Q – How will this expansion impact upon the existing staff at the school? Will additional staff be employed?**

A – Yes, the school will need to recruit additional teaching and support staff.

**Q -How will the proposed expansion impact upon the school curriculum?**

A - The school will continue to deliver the national curriculum as at present. This will not change as a result of these proposals. However, the school will be provided with the additional space necessary to deliver the curriculum for the increased number of pupils.

**Q – Will the admissions procedure for the school change because of the expansion?**

A – No, the admissions procedure will remain the same.

**Q – Has the Council considered any alternative solutions other than the expansion of Edward Peake CofE VC Middle School?**

A – Yes, the Council has considered other alternative solutions however this proposal will provide local places for local children, promoting sustainable modes of travel and will create a more financially and educationally viable middle school above the suggested minimum size of 480 places. It will mean expansion of a popular and Ofsted rated 'Good' school and will promote further partnership working within the Biggleswade Community Union of Schools which is already working together to deliver new places at lower and upper Schools. A feasibility study will be commissioned to inform the design process and ensure that capital investment in the expansion of the school also seeks opportunities to create inspirational learning environments for the school and to maximise community use.

There may be other questions you wish to raise and we will be happy to respond to these at the public consultation meeting on 10 March.

For more information about this proposal please contact Sue Barrow by telephone on 0300 300 5700 or email [sue.barrow@centralbedfordshire.gov.uk](mailto:sue.barrow@centralbedfordshire.gov.uk)

**Edwina Grant, Deputy Chief Executive / Director of Children's Services  
Central Bedfordshire Council, Priory House, Monks Walk, Chicksands, Shefford  
SG17 5TQ**





Appendix B

# **Consultation on the proposed expansion of Edward Peake Church of England Voluntary Controlled Middle School**

Monday 3 March – Monday 31 March 2014

# Edward Peake CofE VC Middle School

## Introductions:

Many Reddick – Head teacher, Edward Peake CofE VC Middle School

Clare Neish – Chair of Governors, Edward Peake CofE VC Middle School

Rob Parsons – Head of School Organisation, Admissions and Capital Planning, CBC

Lydia Braisher – Admissions Manager, CBC

# Edward Peake CofE VC Middle School

## Statutory Responsibilities:

Education Act 1996 – to ensure that there are sufficient and suitable places for those who want them

## Strategic Role:

- Commissioners of places, not necessarily providers
- Promoters of parental choice, diversity, high standards
- Fair Access

# Edward Peake CofE VC Middle School

Central Bedfordshire Council

School Organisation Plan

2013-2018 – Published September 2013

(Annually reviewed and rolled on a further year)

# Edward Peake CofE VC Middle School

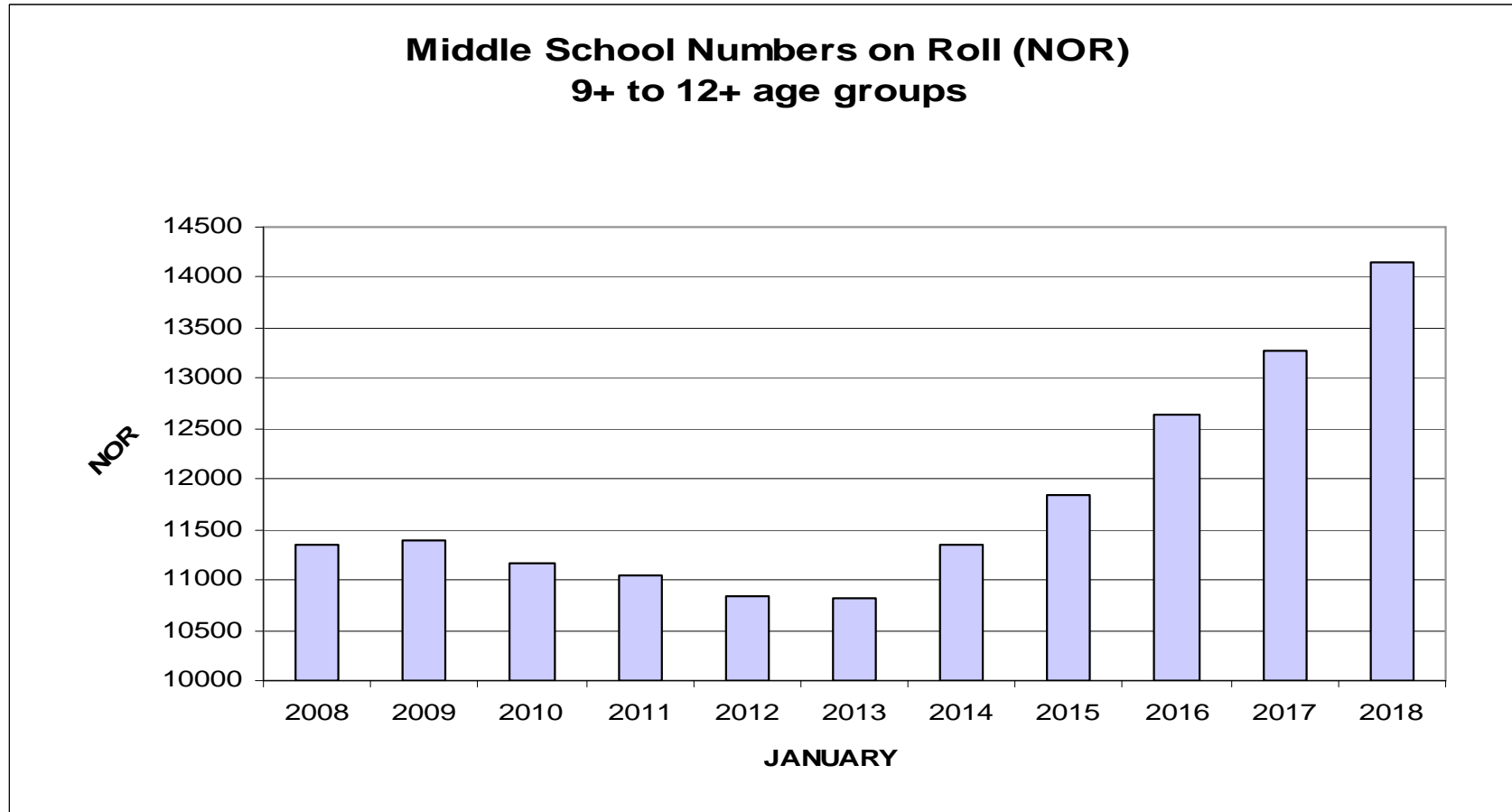
## HOUSING:

New middle school places are required in Biggleswade as a result of significant housing developments in the area.

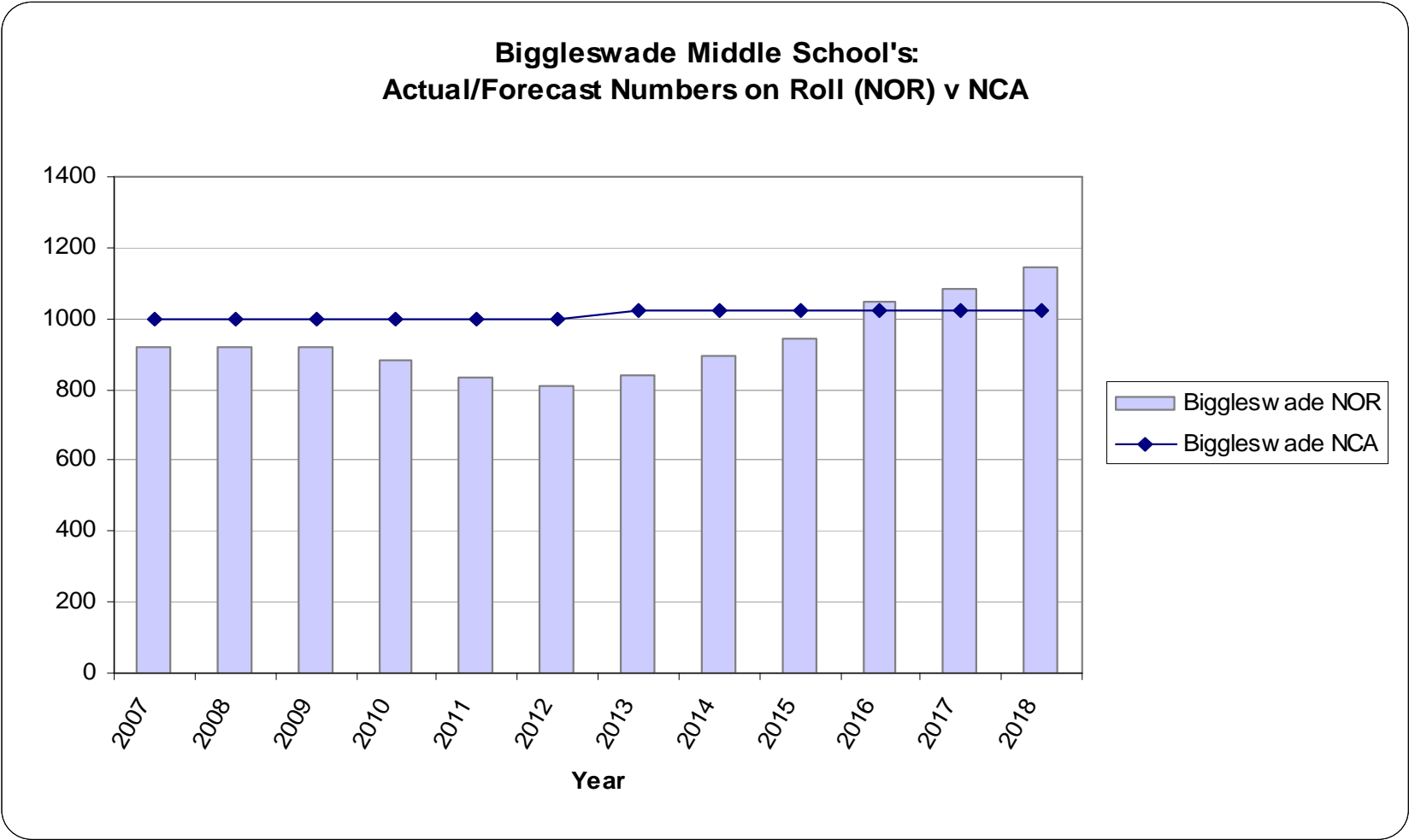
Up to 2018 1,063 dwellings are planned for the Biggleswade area including 1,020 dwellings within the Land East of Biggleswade, South of Potton Road and Kings Reach developments.

From 2019 to 2027 a further 903 dwellings are planned for the Biggleswade area within the Land East of Biggleswade, South of Potton Road and Kings Reach developments

# Edward Peake CofE VC Middle School



# Edward Peake CofE VC Middle School



# Edward Peake CofE VC Middle School

The Council has been working with schools and academies within the Biggleswade area that collectively comprise the Biggleswade Community Union of Schools (BCUS) to review places and plan for the impact of demographic changes across the area over the next five years and beyond.

The pressure on existing provision and the need for more middle school places in this part of Biggleswade is clear, as is the requirement for additional lower and upper school places which are the subject of separate consultation processes.



# Edward Peake CofE VC Middle School

Process so far:

- December 2013 - Executive approved request to consult on the proposed expansion of Edward Peake CofE VC Middle School
- Indicative capital budget established (revenue support to follow)
- School to draft its business case against Council's policy principles
- Consultation launched on Monday 3 March 2014
- Meetings held at school on Monday 10 March 2014
- Consultation ends on Monday 31 March 2014

# Edward Peake VC Middle School

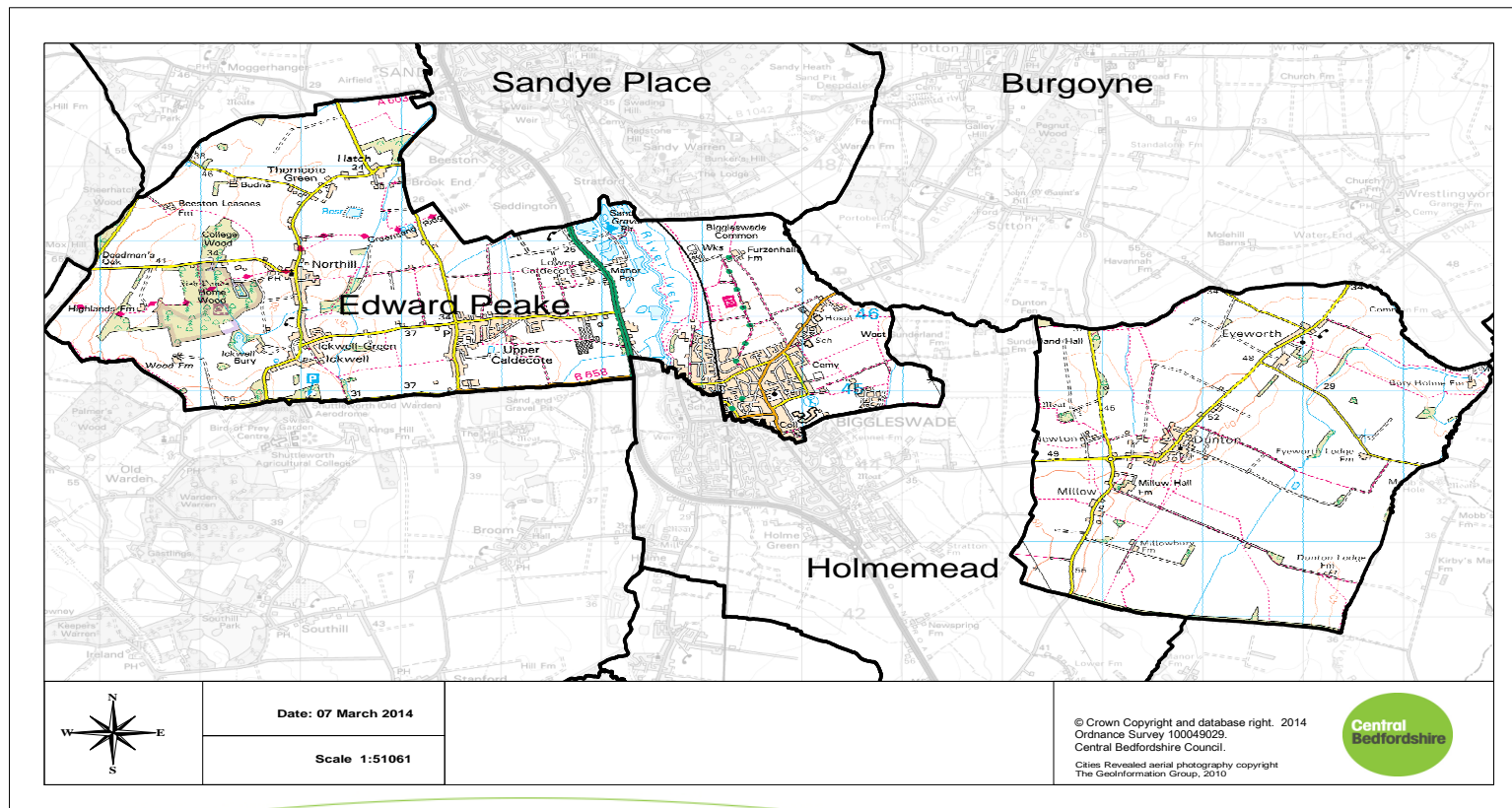
## Admissions Criteria – September 2016

### Published admissions number will be 150 places

- 1) All 'looked after' children or children who were previously 'looked after'
- 2) Children living in the catchment area with siblings at the school
- 3) Children living in the catchment area
- 4) Other children with siblings at the school
- 5) Children, one or more of whose parents/carers have, at the time of application, shown commitment to the Church of England or another Christian church by attending a service at least once a month for the year prior to an application being made
- 6) Children who live nearest to the school determined by straight line distance from the school site to the child's home address

# The school's catchment area

- Catchment area will remain unchanged



# Edward Peake CofE VC Middle School

At Edward Peake CofE VC Middle School:

Development of outline design proposals (feasibility)

Use of DfE area guidelines (BB99)

Full Estimate of Costs

Detailed design proposals (incl phasing)

Submission of planning application (subject to separate planning consultation requirements)

# Edward Peake CofE VC Middle School

## Next Steps:

Report drafted on outcome of consultation

Statutory Public Notices – June 2014

Council's Executive Decision Making (August 2014)

Commissioning of building works July 2015?

Implementation Sept 2016

# Edward Peake CofE VC Middle School

## Consultation Document:

Available from School, Council offices, Council website.

Responses either on-line (preferably) or via post

Closing date – Monday 31 March 2014

Frequently asked questions

Your questions .....

**Consultation on the proposed expansion of Edward Peake Middle School, Biggleswade**

Queries / comments raised at meeting with staff and governors – held at Edward Peake Middle School on Monday 10 March 2014 at 4.00 pm



Meeting led by –

Rob Parsons – Head of School Organisation, Admissions & Capital Planning  
 Lydia Braisher – Admissions Manager  
 Mandy Reddick – Head teacher, Edward Peake Middle School

Note taker - Sue Barrow – Information Manager

Mandy Reddick welcomed all to the meeting and introduced CBC staff to the group. She admitted that she was excited about the project but acknowledged that they need to retain the distinctiveness of the school.

Rob Parsons gave a presentation regarding the proposal; which included the background of local housing growth, the legal process for commissioning new school places, the responsibility of the Council and the stages and length of the process involved. Lydia Braisher advised on the admissions aspect of the proposed expansion

<b>Query / comment</b>	<b>Answer / response</b>
Can the project be delivered by September 2016?	Yes, we are already undertaking feasibility studies. This will be a complex build but we are currently building a 300 place school with a 9 month construction timeframe so this expansion will be possible within this time frame.
Changing an existing building is possibly more expensive than building new. There can be problems when adding a 5th form.	We are aware of the complications of expanding existing provision and are working with the school to ensure that current deficiencies in the existing school can also be addressed where possible.
Is £1.5m the absolute total?	No. It is yet to be confirmed but it will be a quality build.
There any many things that are unsatisfactory in school – e.g. we cannot gather the whole school together, and some building are away from the main block.	We are aware of these concerns and will look to see if we can address them in the new build and refurbishment works that will comprise the expansion project.
Who has the final say on the	CNC Planning and Development Control

design and look of the school?	colleagues will be consulted. The Governing Body will be required to sign off the plan before it goes back to the Council's Executive
Will car parking be considered? The proposal will mean more staff and more children which will result in an increased demand for parking and access for buses	We are aware of these issues. The school's travel plan will be updated and the Council's Sustainable Transport Officers will be consulted. The HT has already met with the designer and advised him of these issues

Rob Parsons further advised that an extra piece of land for a playing field has been secured. He added that we will need to look at how we provide the extra accommodation in the early stages.

He encouraged all staff and governors to respond to the consultation, both as groups and also as individuals.

Mandy Reddick summarised that it will be a long slow process but that the school will have a say in the plans

The meeting closed at 4.30 pm

.



**Consultation on the proposed expansion of Edward Peake Middle School, Biggleswade**

Queries / comments raised at meeting public – held at Edward Peake Middle School on Monday 10 March 2014 at 7.00 pm



Meeting led by –

Rob Parsons – Head of School Organisation, Admissions & Capital Planning  
 Lydia Braisher – Admissions Manager  
 Mandy Reddick – Head teacher, Edward Peake Middle School

Note taker - Sue Barrow – Information Manager

Mandy Reddick welcomed the few attendees to the meeting and introduced CBC staff to the group. She admitted that she was excited about the project but acknowledged that they need to retain the distinctiveness of the school.

Rob Parsons gave a presentation regarding the proposal; which included the background of local housing growth, the legal process for commissioning new school places, the responsibility of the Council and the stages and length of the process involved. Lydia Braisher advised on the admissions aspect of the proposed expansion

Query / comment	Answer / response
Transport is very bad in and out of school. Will extra car parking be considered? The proposal will mean more staff and more children which will result in an increased demand for parking and access for buses. Buses currently have to reverse onto the school site.	We are aware of these issues and this is an opportunity to address them. The Planning process will look into this in more detail and the school's travel plan will be reviewed. We expand local schools so as to allow sustainable methods of travel. The Town Council have spoken to the developers about a crossing point across the main road.
Does the Council have recent experience of expanding a 480 place into a 600 place middle school?	No, but we are taking Holywell in Cranfield from a 544 to a 600 place school. That project is following the same process and there will be similar issues.
Can we visit a project, i.e. a middle school expansion that the Council has completed recently?	The Council's Project Manager has recently delivered expansion projects at Redborne Upper, All Saints and at the University Technical College.

	We are currently working through the most active stage of the 5 year, £108m School Organisation Plan. Visits will be arranged as necessary to similar projects.
Given that much Government funding has dried up and local funding is squeezed hard, can the £1.5m budget for the project be raised?	£1.5m is a QS estimate. The budget is flexible. Most of the funding will come from the developers. The final budget figure will be confirmed in August. The improvements that have recently been commissioned for the school (as part of the Council's 'School Capital Maintenance Programme') are over and above this proposal
Can parents be assured that we are going for a quality expansion?	Yes. The budget for a 120 place expansion will be sufficient.
Will the school's management team be able to cope with the increased workload of this project?	Yes. The Head will be invited to submit a revenue application to the Council's Growth Fund in order to help pay for the time that she is spending on this project and any resulting 'back-filling'.
Will the standard of education that the children currently receive in school continue?	Yes, there is a good leadership team in place and the additional revenue funding will help us to back-fill posts. The additional admin work will be carried out by the admin team and not by the teaching staff.

Rob Parsons closed the meeting and encouraged all present to respond to the consultation.

The meeting closed at 7.40 pm

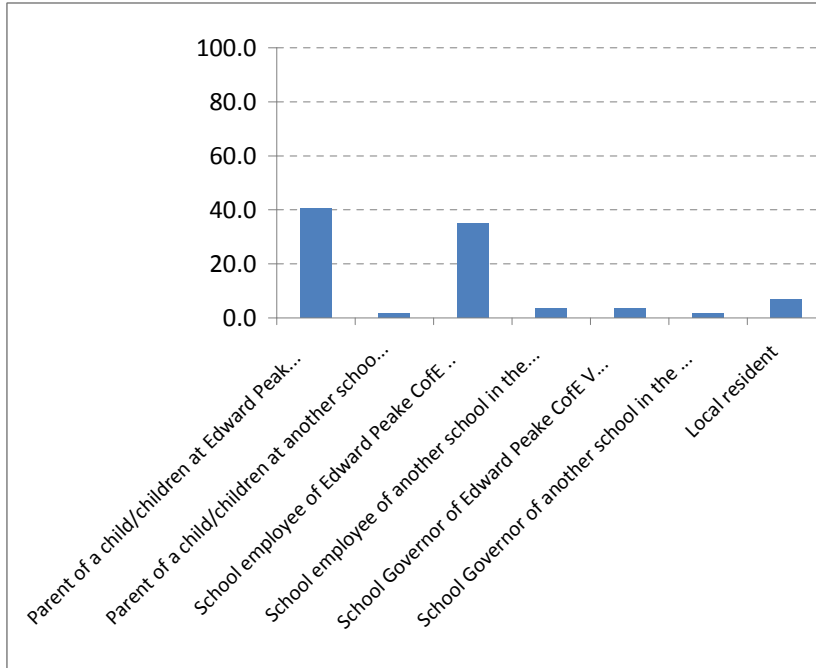
.

**Edward Peake results**  
**Based on 58 responses**

**Appendix E**

**Q1 - Are you a: (Please tick one)**

		Frequency	Percent	Valid Percent
Valid	Parent of a child/children at Edward Peake CofE VC Middle School	23	39.7	40.4
	Parent of a child/children at another school in the area	1	1.7	1.8
	School employee of Edward Peake CofE VC Middle School	20	34.5	35.1
	School employee of another school in the area	2	3.4	3.5
	School Governor of Edward Peake CofE VC Middle School	2	3.4	3.5
	School Governor of another school in the area	1	1.7	1.8
	Local resident	4	6.9	7.0
	Other	4	6.9	7.0
	Total	57	98.3	100.0
Missing		1	1.7	
Total		58	100.0	

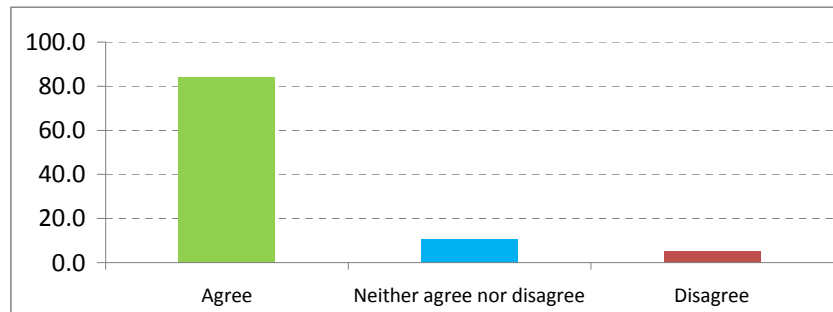


**Q1.a - If other, please specify:**

		Frequency	Percent	Valid Percent
Valid	Diocesan authority	1	1.7	33.3
	Guardian of a child at the school.	1	1.7	33.3
	Local Authority Officer	1	1.7	33.3
	Total	3	5.2	100.0
Missing		55	94.8	
Total		58	100.0	

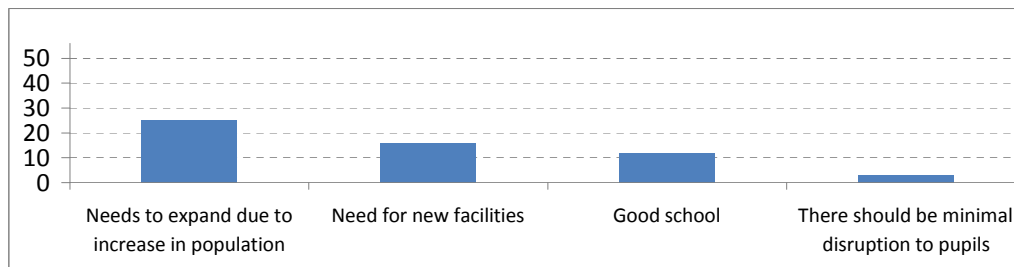
**Q3 - Do you agree or disagree with the proposal to expand Edward Peake CofE VC Middle School?**

		Frequency	Percent	Valid Percent
Valid	Agree	48	82.8	84.2
	Neither agree nor disagree	6	10.3	10.5
	Disagree	3	5.2	5.3
	Total	57	98.3	100.0
Missing		1	1.7	
Total		58	100.0	



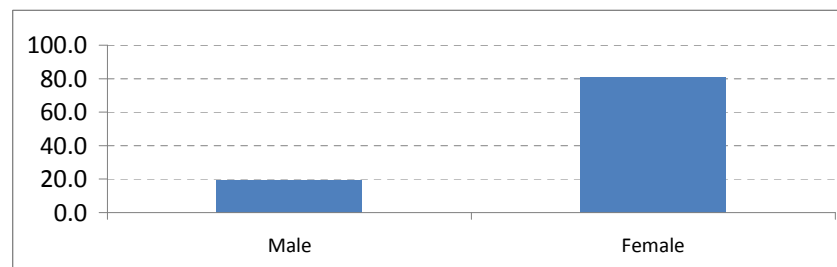
**Q4 - Please give us your reasons why you agree or disagree with the proposed expansion of Edward Peake CofE VC Middle School**

Topic		Frequency
Valid	Needs to expand due to increase in population	25
	Need for new facilities	16
	Good school	12
	There should be minimal disruption to pupils	3



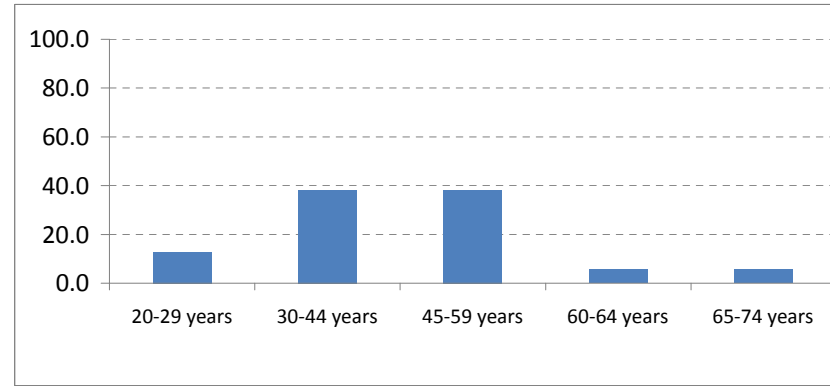
**Q5 - Are you: (please tick one)**

		Frequency	Percent	Valid Percent
Valid	Male	11	19.0	19.3
	Female	46	79.3	80.7
	Total	57	98.3	100.0
Missing		1	1.7	
Total		58	100.0	



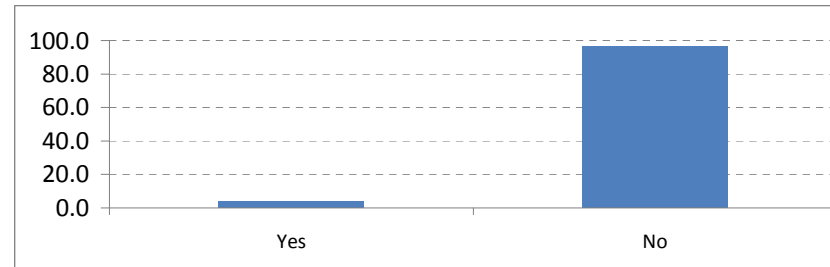
**Q6 - What is your age? (Please tick one)**

		Frequency	Percent	Valid Percent
Valid	20-29 years	7	12.1	12.7
	30-44 years	21	36.2	38.2
	45-59 years	21	36.2	38.2
	60-64 years	3	5.2	5.5
	65-74 years	3	5.2	5.5
	Total	55	94.8	100.0
Missing		3	5.2	
Total		58	100.0	



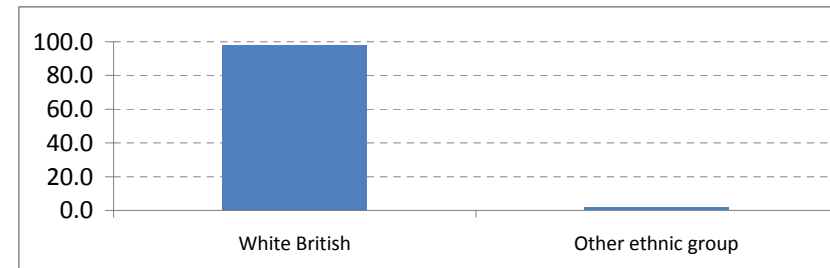
**Q7 - Do you consider yourself to be disabled?**

		Frequency	Percent	Valid Percent
Valid	Yes	2	3.4	3.6
	No	54	93.1	96.4
	Total	56	96.6	100.0
Missing		2	3.4	
Total		58	100.0	



**Q8 - To which of these groups do you consider you belong?**

		Frequency	Percent	Valid Percent
Valid	White British	55	94.8	98.2
	Other ethnic group	1	1.7	1.8
	Total	56	96.6	100.0
Missing		2	3.4	
Total		58	100.0	



**Q9 - What is your postcode?**

	Frequency
Valid	
MK41 6DR	1
Mk443BQ	1
Mk443uj	1
MK45 2BA	1
MK45 4EU	1
pe19 1ra	1
PE19 8PJ	1
SG17 5LB	1
sg17 5tl	1
SG17 5TQ	1
SG18	2
Sg18 0 da	1
SG18 0AN	1
SG18 0BS	1
SG18 0DF	1
SG18 0DN	1
SG18 0ES	1
SG18 0FL	1
Sg18 0fp	1
SG18 0HF	1
SG18 0HH	1
SG18 0HL	1
SG18 0JN	1
SG18 0NX	1
SG18 0PT	1
SG18 8BT	1
SG18 8DY	1
SG18 8ES	1
SG18 8FB	1
SG18 8HD	1

sg18 8qd	1
SG18 8RH	1
Sg18 9ab	2
SG18 9AD	1
SG18 9AQ	1
SG18 9BD	1
SG18 9BH	1
SG18 9BX	3
SG18 9DA	1
SG18 9QS	1
SG180NS	1
Sg189eh	1
SG19 1AE	1
SG19 1HN	1
SG19 2DX	1
SG19 2QB	1
SG19 3JR	1
SG19 9EW	1
SG192RG	1
Total	53
Missing	5
Total	58